



**GSA** Contract Holder  
Contract # 47QRAA22D00DS

**Butte, Montana**  
(406) 782-5220

**Bozeman, Montana**  
(406) 582-0413

**Anaconda, Montana**  
(406) 563-7476

**Great Falls, Montana**  
(406) 761-2290

**Kalispell, Montana**  
(406) 309-6085

**Sheridan, Wyoming**  
(307) 672-7133

[waterenvtech.com](http://waterenvtech.com)



Scan to visit our profile on the GSA eLibrary.

[bit.ly/wetgsa1fyler](http://bit.ly/wetgsa1fyler)



**Contract #:**  
**47QRAA22D00DS**

## GENERAL SERVICES ADMINISTRATION (GSA) SCHEDULE FOR FEDERAL PROJECTS

Water & Environmental Technologies (WET) is a full-service environmental and civil engineering consulting firm that has obtained a GSA Schedule (also called a Federal Supply Schedule or a Multiple Award Schedule [MAS]). A GSA Schedule is a long-term government contract that ensures access to services at fair and reasonable, pre-vetted prices. Since WET has been approved as a GSA Schedule contract holder, government buying has never been simpler and more efficient for our clients.

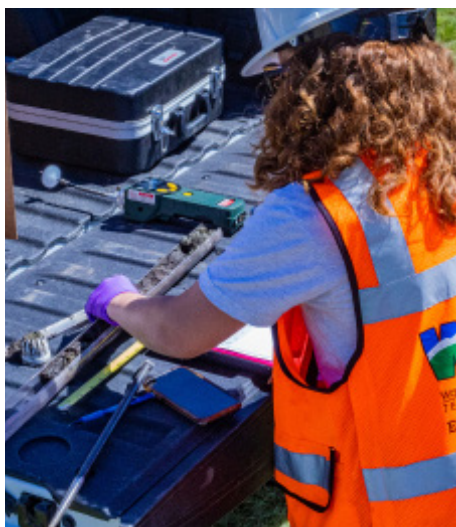
### SIN 541620—ENVIRONMENTAL CONSULTING SERVICES



WET's environmental professionals are here to walk you through your project while providing peace of mind during the entirety of the project. We provide advice and assistance to many organizations on environmental issues by conducting building or site inspections for hazardous materials, measuring/evaluating the risks, and recommending solutions based on the results. These services include:

- Environmental contamination control
- Endangered species habitat plans
- Wetland, watershed, and natural resource management plans
- Archeological or cultural resource management plans
- Environmental initiative management plans
- Environmental Assessments (EAs)
- Environmental Impact Statements (EISs)

### SIN 562910REM—ENVIRONMENTAL REMEDIATION SERVICES



WET is an expert in environmental remediation services involving a range of services to return a contaminated environment into an acceptable condition. Activities include engineering services, management consulting services, hazardous and other waste collection, remediation services, testing laboratories, and research and development in the physical, engineering, and life sciences. These services include but are not limited to:

- Preliminary assessment
- Site inspection
- Testing
- Remedial investigation
- Feasibility studies
- Remedial design
- Containment remedial action
- Removal of contaminated materials
- Storage of contaminated materials
- Security and site closeouts

Butte, Montana  
(406) 782-5220

Bozeman, Montana  
(406) 582-0413

Anaconda, Montana  
(406) 563-7476

Great Falls, Montana  
(406) 761-2290

Kalispell, Montana  
(406) 309-6085

Sheridan, Wyoming  
(307) 672-7133

[waterenvtech.com](http://waterenvtech.com)

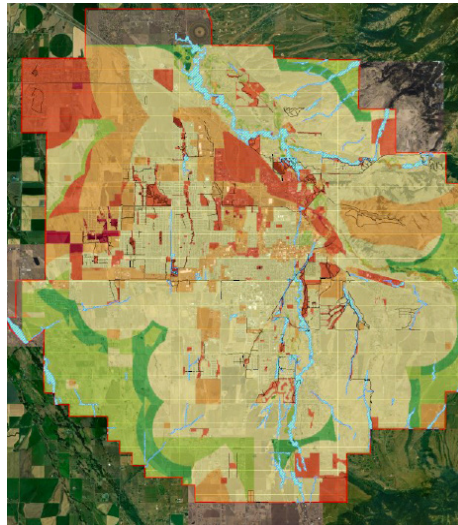


Scan to visit our profile on the GSA eLibrary.  
[bit.ly/wetgsaflyer](http://bit.ly/wetgsaflyer)



**GSA**  
Contract #:  
47QRAA22D00DS

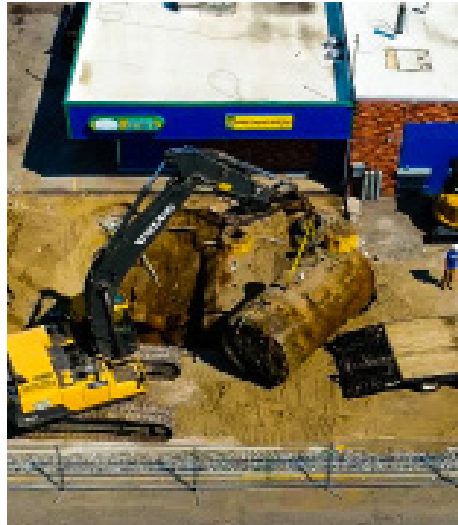
## SIN 541370GIS—GIS SERVICES



WET has extensive experience developing GIS applications and customizing world-leading Geographic Information Services (GIS) software from ESRI such as ArcGIS, ArcPad, and ArcGIS Server. GIS provided include:

- Cultural resource GIS (CRGIS)
- Groundwater monitoring
- Growth forecast modeling
- Habitat conservation plans
- Habitat modeling
- Image analysis support for emergency response
- Mapping
- Cartography
- Mashups
- Migration pattern analysis
- Natural resource planning
- Remote sensing for environmental studies
- Terrestrial, marine, and atmospheric measuring/management
- Vegetation mapping
- Watershed characterization for mitigation planning

## SIN 562910RMI—REMEDIATION SERVICES AMONG MULTIPLE INDUSTRIES



WET is a full-service civil engineering and environmental consulting firm that offers a wide array of services among a wide variety of industries. Our remediation and reclamation services include:

- Site preparation
- Field investigation
- Conservation and closures
- Emergency response cleanup (ERC)
- Underground storage tank/above-ground storage tank (UST/AST) removal
- Air monitoring
- Soil vapor extraction
- Stabilization/ solidification
- Bio-venting
- Carbon absorption
- Containment monitoring or reduction of hazardous waste sites
- Remediation-related laboratory testing
- Creating new land from sea or riverbeds
- Wetland restoration
- Restoring areas to a more natural state

## SIN 541330ENG—ENGINEERING SERVICES



WET offers a full suite of engineering services to solve complex problems across multiple industries. Services include applying physical laws and principles of engineering in the design, development, and utilization of machines, materials, instruments, processes, and systems. Services may involve any of the following activities:

- Provision of advice
- Concept development
- Requirements analysis
- Preparation of feasibility studies
- Preparation of preliminary and final plans and designs
- Provision of technical services during the construction or installation phase
- Inspection and evaluation of engineering projects

To learn more about our GSA Schedule, visit [bit.ly/wetgsaflyer](http://bit.ly/wetgsaflyer).