



# GROUNDWATER SERVICES

**Butte, Montana**  
(406) 782-5220

**Bozeman, Montana**  
(406) 582-0413

**Anaconda, Montana**  
(406) 563-7476

**Great Falls, Montana**  
(406) 761-2290

**Kalispell, Montana**  
(406) 309-6085

**Sheridan, Wyoming**  
(307) 672-7133

[waterenvtech.com](http://waterenvtech.com)



Since its inception in 2000, Water & Environmental Technologies (WET) has grown from a highly specialized group of groundwater professionals into a full-service geoscience, environmental, and engineering consulting firm that offers groundwater services that include water well siting, design, and installation, groundwater studies, groundwater modeling, and water rights.

## Water Well Design & Installation

WET's professional staff has extensive experience with groundwater supply and production wells including design, permitting, and source water protection. We have the capabilities to design and drill test holes and small diameter monitoring wells to higher capacity production wells for a broad range of markets.

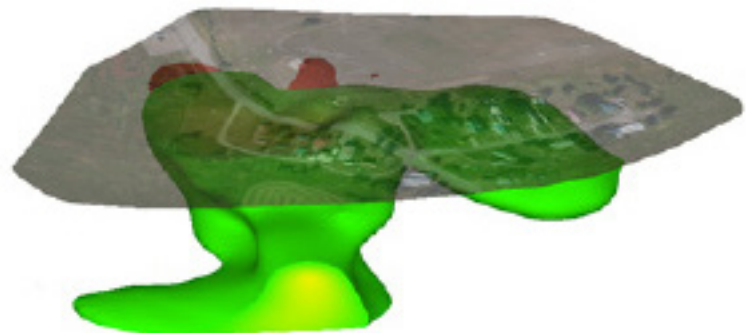
Water availability is dependent on aquifer characteristics of a specific location with production rates, quality, and long-term yield being key components of a water supply. Our focus on field work allows us direct observation of the geology of a given location. Whether in alluvial or bedrock settings, we provide well design to maximize production while minimizing cost.

## Groundwater Studies

Our experts provide accurate groundwater supply and impact studies that help develop the right strategy for your project. We communicate effectively with all parties involved in the project, including our clients, general contractors, and subcontractors to make sure the chosen strategy is implemented properly.

## Groundwater Modeling

An in-depth understanding of groundwater and surface water systems is integral to facility siting, assessment of contaminant transport, construction or remediation purposes, and potential adverse effect on water rights. Accurate field data collection is critical to assisting model development, including accurate geologic logs, monitoring and gauging surface water and groundwater, and sample collection. WET develops groundwater models to design de-watering and groundwater control



**Butte, Montana**  
(406) 782-5220

**Bozeman, Montana**  
(406) 582-0413

**Anaconda, Montana**  
(406) 563-7476

**Great Falls, Montana**  
(406) 761-2290

**Kalispell, Montana**  
(406) 309-6085

**Sheridan, Wyoming**  
(307) 672-7133

[waterenvtech.com](http://waterenvtech.com)



systems, and predict the effects of large production wells on nearby users.

## Water Rights

WET creates stream water depletion models to estimate stream loss due to groundwater pumping, to determine potential adverse effect on senior water rights holders.



To learn more about our groundwater services, visit [waterenvtech.com/groundwater-monitoring](http://waterenvtech.com/groundwater-monitoring) and [waterenvtech.com/groundwater-stormwater-modeling](http://waterenvtech.com/groundwater-stormwater-modeling).

