



## Butte

480 East Park Street  
Butte, MT 59701  
Phone: 406.782.5220

Contact us for a quote  
today!

[septic-net.com](http://septic-net.com)

# Advanced Wastewater Treatment

SepticNET is an innovative, patented, modular septic treatment system designed for use with new home construction; as an upgrade to existing on-site septic systems; or as a complete small community wastewater treatment system. Invented, tested, and manufactured in Montana, SepticNET systems are Level 2 wastewater treatment system approved by the Montana Department of Environmental Quality (MDEQ).

SepticNET systems achieve low contaminant concentration without the use of methanol or other hazardous chemicals and without the use of complicated recycle/recirculation systems.

## Performance

Wastewater treatment is a complicated process involving numerous biological components and various environmental conditions. SepticNET systems' modular design allows it to efficiently remove TN, BOD, and TSS; and allows the system to be easily upgraded to remove additional contaminants as needed.

### Total Nitrogen

- Average Influent: 74.6 mg/L
- High Influent Value: 295 mg/L; 156 gm/L
- Average Effluent: 5.84 mg/L (including start-up samples)
- Lowest Effluent Value: 1.86 mg/L; 2.79 mg/L
- Average Removal Efficiency: 92.2%

### BOD

- Average Influent: 149 mg/L
- Highest Influent Value: 590 mg/L
- Average Effluent: 2 mg/L
- Average Removal Efficiency: 98.7%

### TSS

- Average Influent: 128 mg/L
- Highest Influent Value: 584 mg/L; 480 mg/L
- Average Effluent: 0.2 mg/L
- Average Removal Efficiency: 99%

## Butte

480 East Park Street  
Butte, MT 59701  
Phone: 406.782.5220

Contact us for a quote  
today!

**septic-net.com**

## Advantages

- 320% Better Contaminant Removal
- No Nitrate Mixing Zone
- Smaller Drainfields
- Longer Drainfield Life
- Low Operation & Maintenance Cost
- Easily Expandable
- Montana Invented, Tested, and Manufactured

## Residential Systems

### R-500

- Single Family, On-site System
- Flows up to 500 GPD (5+bedroom house)
- Underground Treatment Vault (10ft x 5.5ft x 8ft tall)

### R-1000

- Multi-family or Shared, On-site System
- Flows up to 1,000 GPD (2 to 4 households)
- Underground Treatment Vault (18ft x 5.5ft x 8ft tall)

## Small Community Systems

Community systems involve custom designs and can be designed for nearly any size of small community.

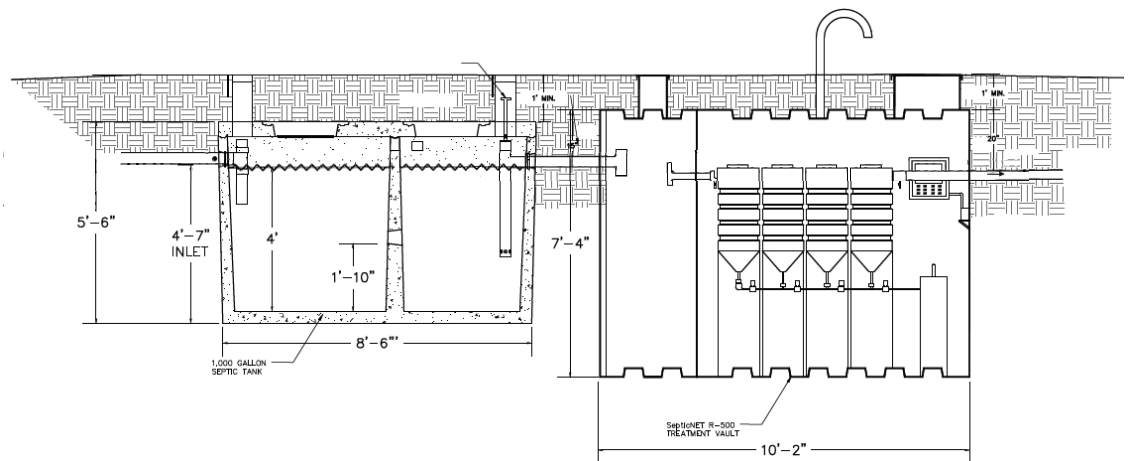


Figure I. SepticNET R-500

Rev. 1 • 20180316 • LIT0008

